

Internal structure of Cambrian vendobionts *Arumberia*, *Hallidaya* and *Noffkarkys* preserved by clay in Montana, USA

GREGORY J. RETALLACK

Department of Earth Sciences, University of Oregon, Eugene, Oregon 97403, U.S.A.
Email: gregr@uoregon.edu

(Received 19 November, 2021; revised version accepted 11 April, 2022)

ABSTRACT

Retallack GJ 2022. Internal structure of Cambrian vendobionts *Arumberia*, *Hallidaya* and *Noffkarkys* preserved by clay in Montana, USA. Journal of Palaeosciences 71(1): 1–18.

Quilted fossils known as vendobionts have remained enigmatic because preserved as unrevealing impressions in sandstone, for example *Arumberia banksi* Glaessner & Walter, *Noffkarkys storaasli* Retallack & Broz, and *Hallidaya brueri* (Wade) Retallack & Broz from the Ediacaran to Cambrian, Grant Bluff and Arumbera formations of central Australia. These same species are reported here in shaley facies of the Early Cambrian Flathead Sandstone of Fishtrap Lake, Montana. These fossils preserved in three dimensions are infiltrated by clay and confirm that each taxon has distinctive internal chambers reflecting segmentation seen on the surface. Sedimentary structures, petrography and geochemistry of the Montana sediments are evidence that *Arumberia*, *Noffkarkys* and *Hallidaya* lived on supratidal flats of a wave-protected rock-bound estuary unaffected by marine bioturbation, and represent intertidal to supratidal ecosystems widespread from the Ediacaran to Cambrian.

Key-words—Cambrian, Vendobiont, *Arumberia*, *Noffkarkys*, *Hallidaya*.

INTRODUCTION

PETROGRAPHIC thin sections now reveal internal structure of a variety of problematic vendobiont fossils which span the Ediacaran–Cambrian boundary: *Arumberia banksi* Glaessner & Walter (1975), *Noffkarkys storaasli* Retallack & Broz (2020), and *Hallidaya brueri* (Wade) Retallack & Broz (2020). These species were previously known from Ediacaran and Early Cambrian sandstone impressions in central Australia (Retallack & Broz, 2020), but Cambrian examples from clayey intertidal facies of the lower Flathead Sandstone near Fishtrap Lake, Montana (Retallack, 2013a), are infiltrated with fine clay in a way that reveals histological organization important to understanding their biological affinities. They are not thoroughly permineralized with calcite, silica, phosphate, or pyrite, like permineralized fossil plants and lichens (Matten, 1973; Gould & Delevoryas, 1977; Taylor *et al.*, 1997; Yuan *et al.*, 2005; Bippus *et al.*, 2017), but do reveal the three-dimensional organization of recalcitrant versus easily decayed tissues that has been helpful in understanding unmineralized fossil plants and lichens (Jennings, 1974, 1985; Retallack, 2009, 2011).

A secondary aim of this study is to re-evaluate the idea of Ediacaran–Cambrian agronomic revolution (Seilacher & Pflüger, 1994; Oji *et al.*, 2018), Ediacaran savanna hypothesis (Budd & Jensen, 2017), garden of Ediacara (McMenamin, 2000), and underground Vendobionta (Grazhdankin & Seilacher, 2002). These terrestrial metaphors have been used to describe changes in seas of the past, but what of Ediacaran–Cambrian changes on land from the large number of recently recognized Ediacaran and Cambrian paleosols (Retallack, 2013b, 2016a, b; Liivamägi *et al.*, 2014)? Rather than assuming that all Ediacaran and Cambrian rocks are marine, there is now the prospect of comparing and contrasting marine and terrestrial evolution. Did the churning of substrate by marine organisms destroy Ediacaran marine matgrounds as a catastrophe or pulsed catastrophe (Schiffbauer *et al.*, 2016; Darroch *et al.*, 2018b; Buatois *et al.*, 2018), or was it a drawn-out transition (Buatois *et al.*, 2014; Shahkarami *et al.*, 2017; Laing *et al.*, 2019), or compromised by sea level changes (Shahkarami *et al.*, 2020)? Or were terrestrial vendobionts (“Mattressland” of Retallack & Broz, 2020) unaffected by the evolution and intensification of marine bioturbation (“Wormworld” of Schiffbauer *et al.*, 2016)?

GEOLOGICAL SETTING AND FOSSILS

The fossils described here from near Fishtrap Lake, in Sanders County, Montana (Fig. 1) are pre-trilobite Early Cambrian in age (522–539 Ma), based on associated trace fossils (Retallack, 2013a). The fossils were all obtained from a 1.7 m thickness of red siltstone, which is a sequence of six thin paleosols within the basal Flathead Sandstone (Fig. 2). These red siltstones have a distinctive assemblage of trace fossils, *Manykodes pedum*, *Bergaueria hemispherica*, *Didymaulichnus lyelli* and *Torrowangea* (Retallack, 2013a). *Manykodes pedum* (Dzik, 2005) is sometimes still referred to as the superseded name “*Treptichnus*” *pedum* (Buatois, 2018), but the Pennsylvanian ichnogenus *Treptichnus* is inappropriate in several ways, especially its long straight sections of burrow between looping stitches (Maples & Archer, 1987; Rindsberg & Kopaska-Merkel, 2005).

The trace fossils are of Early Cambrian age, stratigraphically below the first appearance of trilobite trace fossils in the Flathead Sandstone (Retallack, 2013a), and well below an early Middle Cambrian assemblage of trilobites of the *Albertella* zone in the Wolsey Shale (Walcott, 1917; Keim & Rector, 1964; Bush, 1989). Sedimentary facies are evidence of a rockbound estuary unconformable on littoral talus of the Mesoproterozoic Libby Formation (Retallack, 2013a), a sedimentary setting comparable with modern Coos Bay, Oregon (Lund, 1973).

The marine trace fossils are all within the beds, which show mineral and chemical trends of weathering, and negative strain and mass transfer of paleosols downward from horizons of abundant vendobionts in growth position (Retallack, 2013a). In contrast the vendobiont fossils *Arumberia*, *Hallidaya* and *Noffkarkys* are on the bed and paleosol tops marked by clay enrichment and more abundant ferruginized

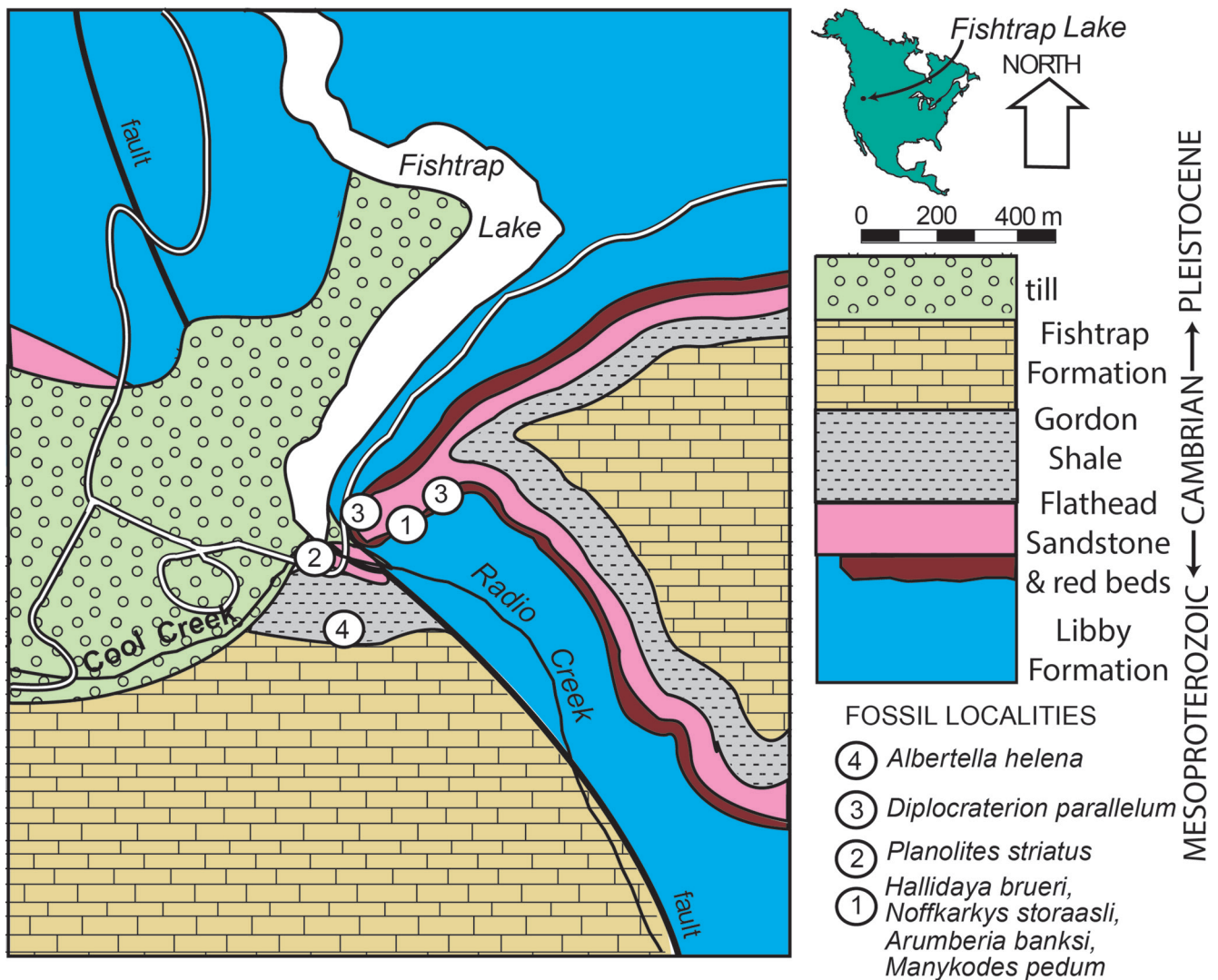


Fig. 1—Geological map of fossil localities near Fishtrap Lake, Montana (Retallack 2013a).

microscopic filaments (Fig. 2). Ferruginized filamentous structures on the tops of the beds vary from 38 volume % in the surface (A) horizons to 12 volume % in subsurface (C) horizons, as determined from point counting thin sections (Retallack, 2013a) and magnetic susceptibility (Retallack *et al.*, 2003). The red paleosols are of two distinct kinds: (1) Radio pedotype with A–Bg–C profile, including Bg horizon with marcasite (Sulfaquent of intertidal flats), and (2) Cool pedotype with A–C horizons only (Fluvent of supratidal flats).

Although the red siltstones are rock now, they were soft soils easily penetrated by filamentous microbial structures.

MATERIALS AND METHODS

This work involved small scale geological mapping of the locality at Fishtrap Lake Montana (Fig. 1), as well as field study of comparable assemblages in the Arumbera and Grant Bluff formations of central Australia (Retallack

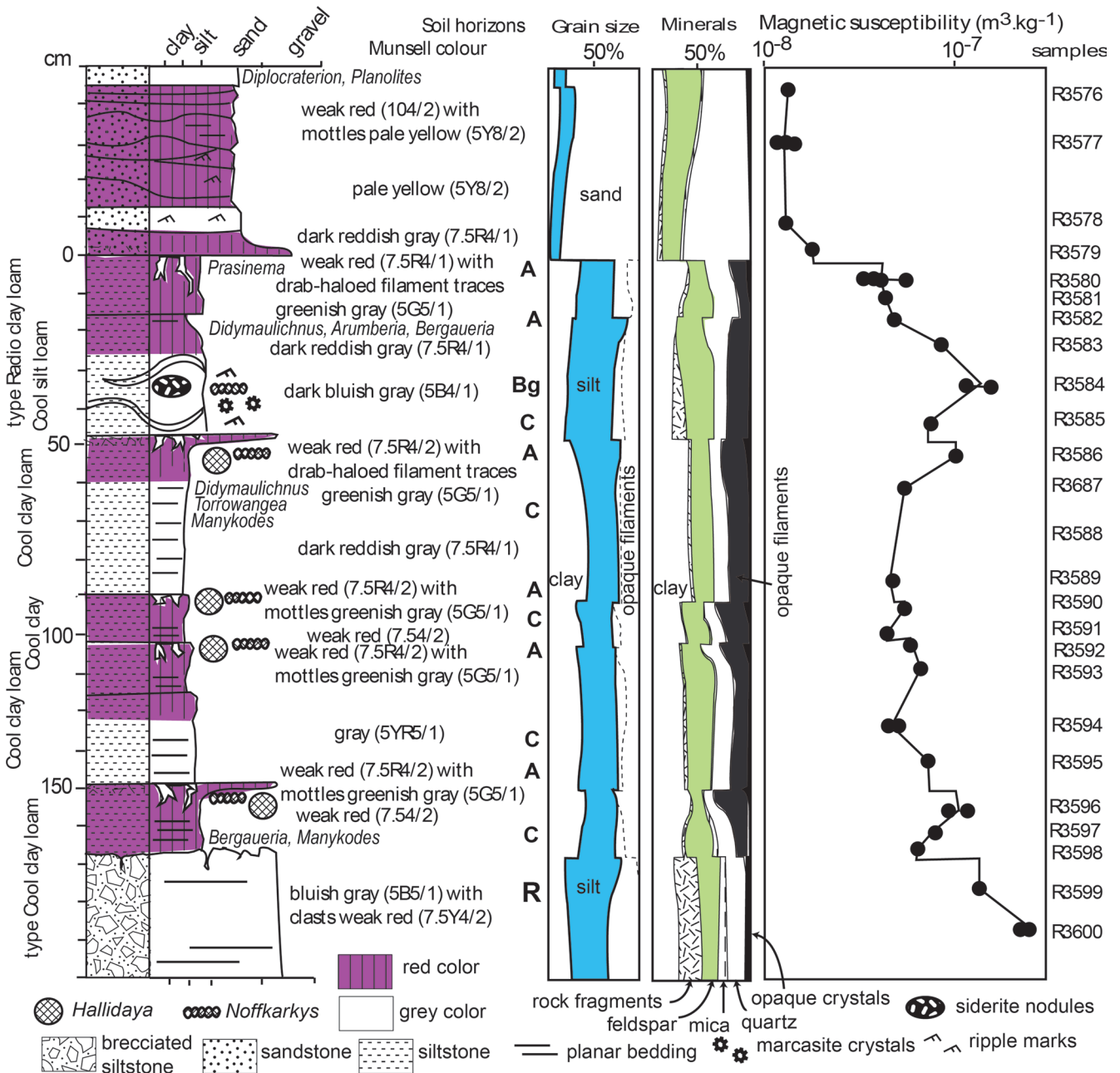


Fig. 2—Measured section of fossil localities in the Early Cambrian Flathead Sandstone near Fishtrap Lake, Montana. Grain size and mineral composition was determined by point counting petrographic thin sections, and magnetic susceptibility measured from hand specimens (Retallack, 2013a).

& Broz, 2020), Synalds, Lightspout, and Bridges formations near Church Stretton, England (Bland, 1984; McIlroy *et al.*, 2005), Jodhpur Sandstone, India (Kumar & Pandey, 2008), Bonney Sandstone in Brachina Gorge, Flinders Ranges, South Australia (Bland, 1984), and Billy Creek Formation in the eastern Flinders Ranges, South Australia (Bland, 1984; Retallack, 2008), as well as museum collections of Geoscience Australia, Canberra A.C.T. New collections of megafossils from all these localities are curated in the Condon Collection of the Museum of Natural and Cultural History of the University of Oregon in Eugene (online catalog at <http://paleo.uoregon.edu/condon/>). Several fossils protruding from edges were sacrificed for preparation of petrographic thin sections, and all thin sections were cut vertical to bedding. A previous study reports data from point-counting thin sections, major element geochemistry, and magnetic susceptibility of this sequence (Retallack, 2013a). Laser scans of several specimens were provided by Jesse Pruitt of the Visualization Center of the Idaho Museum of Natural History, Idaho State University, Pocatello.

ARUMBERIA BANKSI GLAESSNER & WALTER 1975

Morphology

Arumberia is a scoop-shaped fossil with radiating furrows from the deepest end (Figs 3C–D, 4E–F, 5C), a strict definition close to the holotypes of the genus recently redescribed (Retallack & Broz, 2020). There has been dispute about whether *Arumberia* is a microbially mantled sedimentary structure, such as a linguoid ripple mark or flute cast, rather than a megafossil (McIlroy & Walter, 1997; McIlroy *et al.*, 2005). Recent study of the type material in Canberra (Geoscience Australia CPC14948) shows that *Arumberia* has inverse topology to a ripple (Retallack & Broz, 2020), but was not a microbially mantled flute cast either, because thin sections of material from Australia (Retallack & Broz, 2020) and in this paper (Fig. 6C–D) show that it has a complex quilted internal structure. This three-dimensional pattern is comparable with thin sections of enigmatic Ediacaran Vendobionta (Seilacher, 1992): Chinese

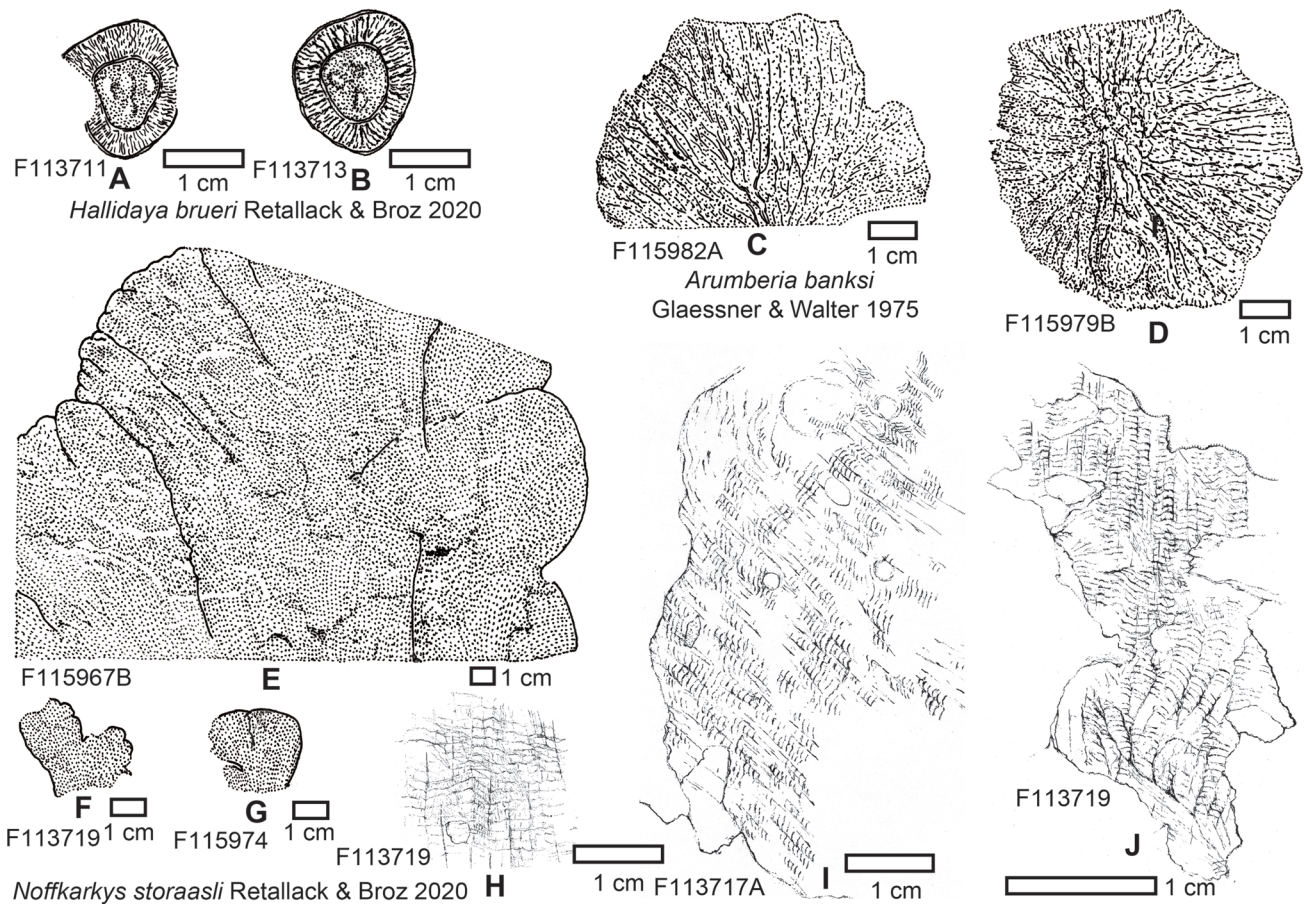


Fig. 3—Sketches of Early Cambrian megafossils from Fishtrap Lake, Montana: *Hallidaya brueri* (Wade) Retallack & Broz (A–B), *Arumberia banksi* Glaessner & Walter (C–D), and *Noffkarkys storaasli* Retallack & Broz (E–J).

Yangtziaramulus zhangii (Xiao *et al.*, 2005; Shen *et al.*, 2009), Namibian *Pteridinium simplex* (Jenkins, 1992; Grazhdankin & Seilacher, 2002), *Swartpuntia germsi* (Narbonne *et al.*, 1997), and *Ernietta plateauensis* (Jenkins *et al.*, 1981; Ivantsov *et al.*, 2015), and Siberian *Charnia masoni* (Grazhdankin *et al.*, 2008). Also comparable are internal chambers of Silurian *Rutgersella* (Retallack, 2015a) and Devonian *Protonympha* (Retallack, 2018). Despite these constructional similarities, these other fossils have subhorizontal zig-zag sutures, mid-ribs, or vanes not seen in *Arumberia*. Both *Pteridinium* and *Ernietta* have concave-up morphology embedded within sediment, and partly filled with sediment (Grazhdankin & Seilacher, 2002; Ivantsov *et al.*, 2015), like *Arumberia*.

Measurements

Specimens from Fishtrap Lake fall within the 31–124 mm width of type material of *Arumberia banksi* from central Australia (Retallack & Broz, 2020). Specimen P15979A–B (part and counterpart) is the most complete specimen: 82 mm wide (perpendicular to striation) and more than 84 mm long (incomplete). Central striations are 2.5–4 mm apart and each 0.3–0.4 mm wide: dimples (hypichnial mounds) are 1.8–4.6 mm in diameter. Specimen P15982A–B (part and counterpart) is 84 mm wide and incomplete in length. Its striations are spaced at 2.3–5.6 mm and are 0.6–1.6 mm wide.

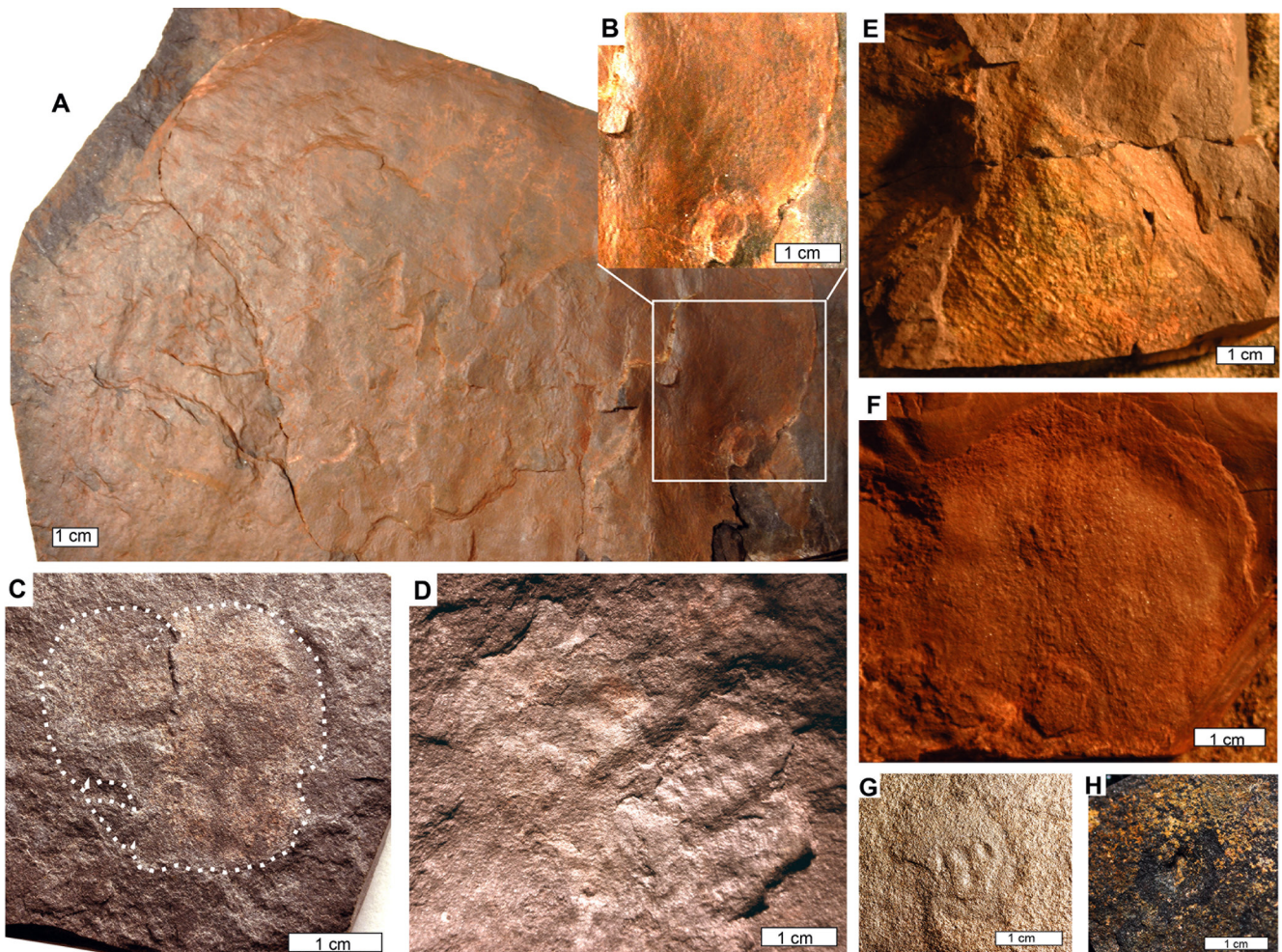


Fig. 4—Fossils from the Early Cambrian Flathead Sandstone at Fishtrap Lake, Montana: *Noffkarkys storaasli* (A–D), *Arumberia banksi* (E–F), and *Hallidaya brueri* (G–H). Specimen numbers (Condon Collection, University of Oregon) and stratigraphic levels (after Retallack 2013a) F115967B at–105 cm (A–B), F115974 at–150 cm (C), F113719 upper side of slab at–150 cm (D), F115982 (E) and F115978 (F) both from–45 cm; F113713 (G) from–100 cm, and F113711 (H) from–150 cm.

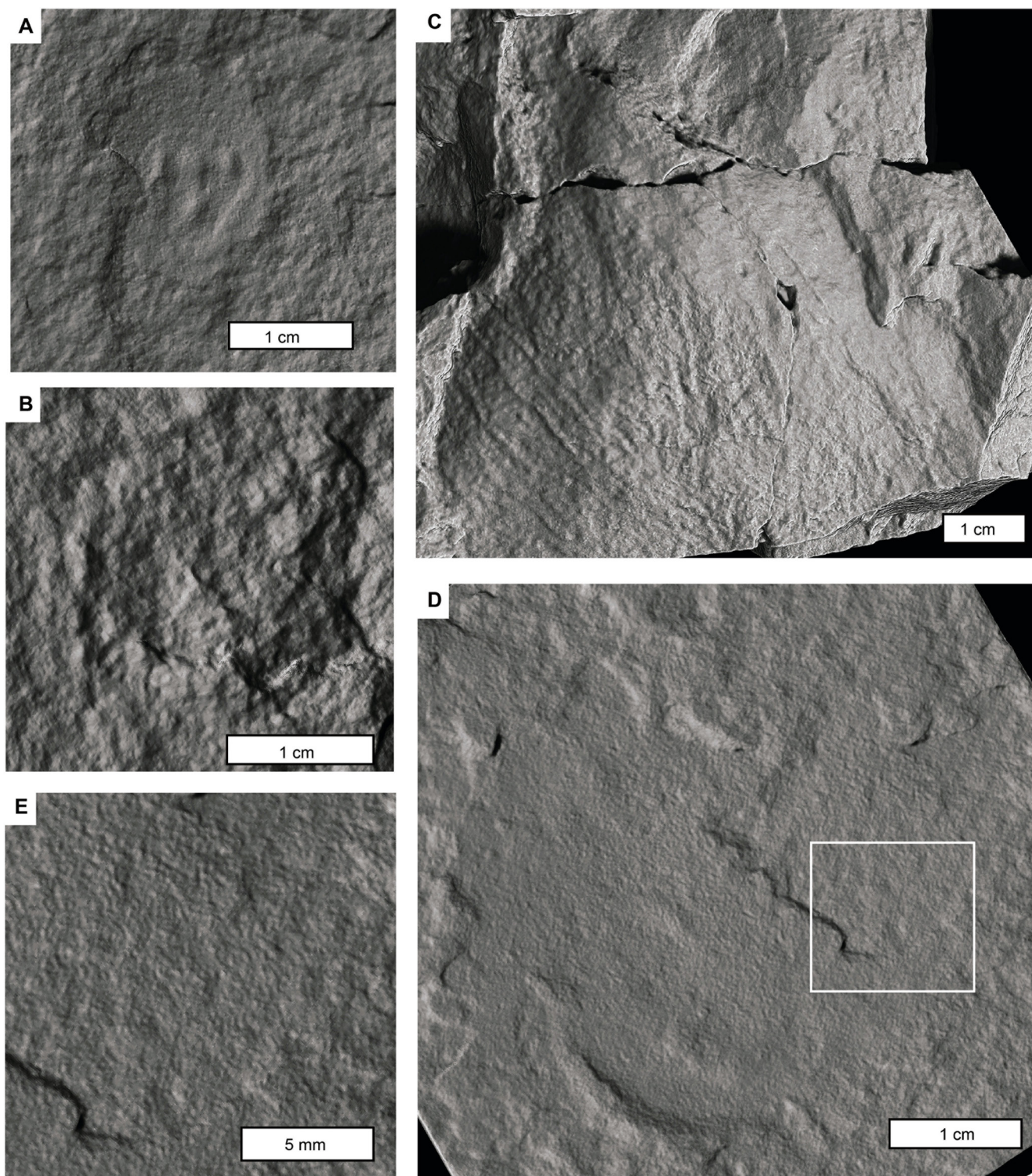


Fig. 5—Laser scans of Early Cambrian megafossils from Fishtrap Lake, Montana: *Hallidaya brueri* (Wade) Retallack & Broz (A–B), *Arumberia banksi* Glaessner & Walter (C), and *Noffkarkys storaasli* Retallack & Broz (D–E), including F113711 (A), F116823A (B), F115982A (C) and F115974 (D–E).

Histology

In thin section the clay–poor silty interior of the fossil is very distinct from its clayey matrix with abundant ferruginized filamentous structures (Fig. 6C–D, K). The silty ellipse of the interior is outlined by a very thin organic layer and bisected by a thick, zigzagging, subhorizontal, carbonaceous seam. At intervals of 1–2 mm this central carbonaceous seam has short vertical seams reaching either up or down in the same direction as the flexure at the point of juncture. This distinctive double layer “quilting” (in the sense of Seilacher, 1992) is identical to that of *Dickinsonia* (Retallack, 2016a), *Rutgersella* (Retallack, 2015a), and *Protonympha* (Retallack, 2018), but more complex than the single layer “quilting” pattern of *Yangtziaramulus* (Shen *et al.*, 2009), *Pteridinium* (Grazhdankin & Seilacher, 2002) and *Ernietta* (Ivantsov *et al.*, 2015). The vertical struts at inflections also differentiate it from a thin abiotically leached layer. On the other hand, frond fossils, such as *Charnia* and *Swartpuntia*, are internally much more complex with multiple orders of fractal branching (Narbonne *et al.*, 1997; Grazhdankin *et al.*, 2008; Retallack, 2016a).

Biological affinities

Chambered organization and disruption of the substrate below is evidence against interpretation of *Arumberia* as a sedimentary structure, such as a linguoid ripple or flute cast, with or without a mantling microbial mat (McIlroy & Walter, 1997; McIlroy *et al.*, 2005). Modern microbial mat mantles considered comparable with *Arumberia* by Kolesnikov *et al.* (2012), are internally laminated, not chambered and disrupted like *Arumberia* (Retallack & Broz, 2020). By an alternative interpretation (Kumar & Pandey, 2008; Kolesnikov *et al.*, 2012; McMahan *et al.*, 2021), *Arumberia* is a continuous surface microbial texture and not a discrete individual fossil, but that interpretation does not apply to its holotype specimens (Retallack & Broz, 2020) or the material described here. The silt or sand associated with *Arumberia* is similar to equally problematic “psammocorals” (Seilacher, 1992), but these have much higher relief and an outer organic rind enclosing passive sand fill (Savazzi, 2007), not matched by the internal orthogonal organic seams of *Arumberia* at Fishtrap Lake (Figs 6C–D, K) and in Central Australia (Retallack & Broz, 2020, figs 6c, 8b, d, f).

The original interpretation of *Arumberia* is that it was a cup-shaped cnidarian polyp, which fell on its side with some included sediment (Glaessner & Walter, 1975). General objections to cnidarian interpretation of vendobionts (Seilacher, 1992) have led to more recent interpretations as an extinct stem metazoan (Hoyal Cuthill & Han, 2018). The asymmetric scoop shape of *Arumberia* is not like a partially filled polyp of a cnidarian, nor stem metazoan (Retallack & Broz, 2020). Some specimens of *Arumberia banksi* are laterally linked and intergrown without reaction

tissue (Glaessner & Walter, 1975), like *Pteridinium simplex* (Grazhdankin & Seilacher, 2002) and *Phyllozoon hanseni* (Retallack, 2007), but unlike integrated tissues of metazoan individuals.

An alternative interpretation is that *Arumberia* was a recumbent, areolate lichen (Retallack, 1994), perhaps a glomerolichen (Retallack, 2015b). Like *Pteridinium simplex* (Grazhdankin & Seilacher, 2002) and *Ernietta plateauensis* (Ivantsov *et al.*, 2015), it lived on and partly buried by sediment and included sediment less clayey than its matrix. In a supratidal paleosol context (Fig. 2) this sediment would have been eolian loess and silt, distinct from fluvial and intertidal clay settling from suspension. Perhaps they had hollows and intersquamule cavities that trapped sediment like window lichens (“Fensterflechten”) such as *Lecidea decipiens* and *Eremastrella tobleri* (Vogel, 1955), and *Endocarpon crystallinum* (Timdal, 2017). Silica permineralized *Ernietta* studied in thin section by Pflug (1973, 1994) were constructed of hollow tubular elements, like lichen podetia of woven filaments (Retallack, 1994). Unlike modern podetia of *Cladonia* (Brodo *et al.*, 2001), *Ernietta*, *Pteridinium*, *Yangtziaramulus*, *Charnia* and *Arumberia* had a system of tubes amalgamated along their length into sheets.

NOFFKARKYS STORAASLI RETALLACK & BROZ 2020

Morphology

The most striking feature of *Noffkarkys* is its fine regular rhomboid quilts, arranged between radiating grooves (Figs 3E–J, 4A–D, 5D–E). This arrangement is like rhomboid scales of palaeoniscid fish (Wade, 1935; Schaeffer, 1984), but without hard parts, only impressions bulging upwards in shale (Fig. 6A–B, I). These fine quilts are difficult to photograph because of a size that appears like a blur, so alternative images are provided of sketches (Fig. 3H–J) and laser scans (Fig. 5D–E).

Most *Noffkarkys* specimens do not show the overall shape because they are larger than the slab. The small holotype from central Australia centered on a slab shows an obovate, laterally lobed, frond. This is most like Ediacaran fronds such as *Beothukis* and *Trepassia* (Narbonne *et al.*, 2009; Brasier *et al.*, 2012), which lack holdfasts or stems, and were also prostrate on the sediment surface (McIlroy *et al.*, 2021). A large collection of *Noffkarkys* from Fishtrap Lake shows considerable variation in size and shape from simple bilobed fronds (Figs 3G, 4C) to complex lobate forms (Figs 3E, 4D). Some lateral margins are overfolded (left in Figs 3E, 4A) as if pushing upwards against resistance to growth in that direction, but other margins are nearly flush with the surface (right side of Figs 3E, 4A). Some specimens show overlap of lobes (Figs 3G, 4C) with one lobe above the other. Regardless of the size

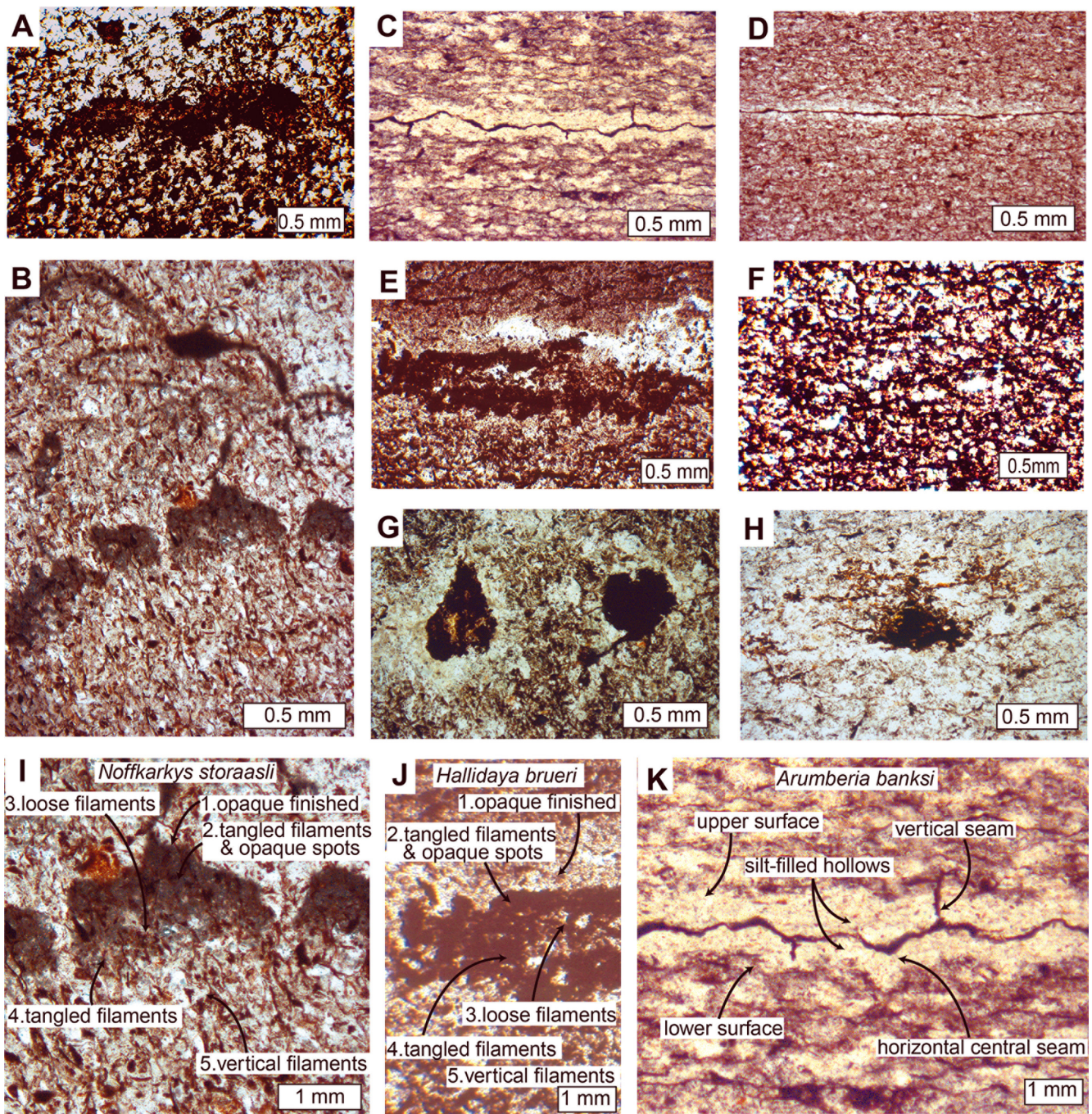


Fig. 6—Petrographic thin sections of quilted (A–D, I, K), discoid (E–F), and filamentous fossils (G–H) and trace fossil (B) from the basal Cambrian Flathead Sandstone at Fishtrap Lake, Montana, with labelled enlargements (I–K from 4, 5, 2 respectively). *Noffkarkys storaasli*, are finely quilted unifacial surfaces (A–B, I), with a finished upper surface grading into filamentous lower part. *Arumberia banksi* Glaessner & Walter is a coarse quilted structure defined by vertical and horizontal organic seams (C–D, K). *Manykodes pedum* (B) burrows have a looping stitch pattern and thin organic walls. *Hallidaya brueri* discoids (E–F, J) have dense upper and lower cortices, sometimes well preserved (E), sometimes decayed (F). Opaque organic filaments have a surrounding gray–green halo (G–H). Specimen numbers (Condon Collection, University of Oregon) and stratigraphic levels (after Retallack 2013a) are R3584 at–40 cm (A), R3598 at–160 cm (B, I), R3581 at–10 cm (C, K), F113720 at–110 cm (D), R3586 at–50 cm (E, J), R3596 at–150 cm (F), R3586 at–50 cm (G–H).

of the lobes or overall thallus, quilts and grooves retain the same size and spacing.

Some *Noffkarkys* specimens imprint planes sub-perpendicular to the bedding, covering fractures and muddy surfaces (argillans) that define the blocky structure of the Cool paleosol (specimens F113703, F115958). On upper bedding surfaces *Noffkarkys* forms lobate molds with striation radiating in all directions from a common centre, but subperpendicular *Noffkarkys* has flabellate shape with grooves radiating upwards. The quilted texture of *Noffkarkys* in one specimen drapes and smooths desiccation cracks, and rounds originally angular polygons of cracks (Retallack, 2013a, fig. 2G). In other cases, *Noffkarkys* overprints a pyrite spherulite of the form commonly known as a “pyrite sun” (Retallack, 2013a, fig. 2D).

Measurements

Fishtrap Lake *Noffkarkys storaasli* falls well within the size range of 13–72 mm wide (Fig. 7C–E) for paratypic material from central Australia (Retallack & Broz, 2020). The largest of 136 specimens collected from Fishtrap Lake (Figs 3E, 4A) is incomplete at 271 mm wide and 223 mm long, with lobes 81–137 mm wide. Projecting backward along the converging seams between lobes to the initial growth center, gives an additional 210 mm, for a total of length of 443 mm. If several such lobes were arranged radially around a growth center as in the Ediacaran frond *Bradgatia* (Flude & Narbonne, 2008; Brasier *et al.*, 2012), then the whole structure could have been 0.9 m in diameter. Spacing of radiating grooves on the central Australian holotype is 1.7 ± 0.2 mm, and quilt widths are 0.5 ± 0.2 mm (Retallack & Broz, 2020), whereas 100 comparable measurements for a Fishtrap Lake specimen (Figs 4C, 5D–E) are 1.5 ± 0.3 mm, and 0.8 ± 0.2 mm (mean and one standard deviation), respectively (Fig. 7C–E).

Histology

Thin sections of *Noffkarkys* reveal that the upward bulging dark quilts are separated by deep grooves (Figs 6A–B, D). Within the quilts are four layers, from the top downwards; (1) dense fabric in a thick (100–200 μm) dark gray layer with opaque spots (20–50 μm diameter); (2) loose fabric in a thick (50–120 μm) semitransparent layer of loosely woven fabric; (3) tangled fabric in a basal thin (50–80 μm) layer of gray densely woven fabric, breached in places; (4) vertical fabric in a layer of vertically oriented, loosely woven, filaments extending downward more than 2 mm. Layer 4 connects in some places in the middle of the quilts with layer 2, and at other places within the quilt defining radial grooves, layer 4 is open to the surface. Openings in the entire structure and diffuse contacts of layers 2–4 compared with the sharpness

of layer 1 give the whole structure strong asymmetry in the vertical plane in which the thin sections were cut.

Filamentous structures seen in thin section are also apparent from scanning electron micrographs in secondary mode, revealing twisted dark tubular features 25–100 μm in diameter which branch downward from quilt margins into the matrix (Fig. 8A–B). At high magnification the clay has the crystal form of illite (Fig. 8C). Under back-scatter electron mode in which brightness of tone indicates atomic number, the grooves and quilt margins of natural fossil surfaces are bright with iron and the quilt faces dull with carbon and clay (Fig. 8D). This thin ferruginous (hematite) film may have aided preservation of the most distinct examples of *Noffkarkys storaasli*.

Biological affinities

Fronde fossils like *Noffkarkys*, which also ranges down into the Ediacaran (Retallack & Broz, 2020), were once regarded as cnidarian sea pens (Pennatulacea: Fedonkin *et al.*, 2008), although their apical growth and quilt-like construction is the opposite of sea pens (Antcliffe & Brasier, 2007, 2008). Ford (1958) was first to compare quilted Ediacaran fossil impressions with seaweeds. Modern seaweeds with quilted thalli generally comparable with *Noffkarkys* include *Padina pavonica* (Phaeophyta), *Codium effusum* (Chlorophyta), and *Delessaria serrulata* (Rhodophyta), but these have distinct blades and holdfasts (Bold & Wynne, 2000), not seen in the Montanan or central Australian *Noffkarkys*. Fossil algae are either skeletonized and prone to brittle breakage, or organic and flimsy, preserved as carbonaceous films (Taylor & Taylor, 1993), unlike molds and casts of the flexuous Fishtrap Lake fossils. Histologically the elongate filaments of *Noffkarkys* are more like green algae (Chlorophyta, Codiaceae), than equant cells of red (Rhodophyta) and brown algae (Phaeophyta: Bold & Wynne, 2000), but their stratification into subhorizontal layers is very different. Seaweeds wilt and rot in piles of wrack on beaches and well drained soils (Retallack, 1994), but do not spread with pressure buckling, and coat perpendicular surfaces like *Noffkarkys*.

Seilacher (2007) regarded comparable quilted fossils such as *Dickinsonia* as xenophyophore foraminifera for the following reasons: (1) quilt size independent of overall size; (2) clastic fill, like stercomere or incorporated substrate; (3) sessile habit on or within sediment; (4) evidence of interpenetration and regeneration; and (5) trails of mobile forms. The Montana fossils have a diffuse lower boundary attaching them to the substrate like xenophyophores, but xenophyophores have brittle calcified skeletons, whereas the Fishtrap Lake vendobionts were pliable, folded, soft-bodied organisms, molding over clasts, cracks, and pyrite suns (Retallack, 2013a). Xenophyophores are marine animals of

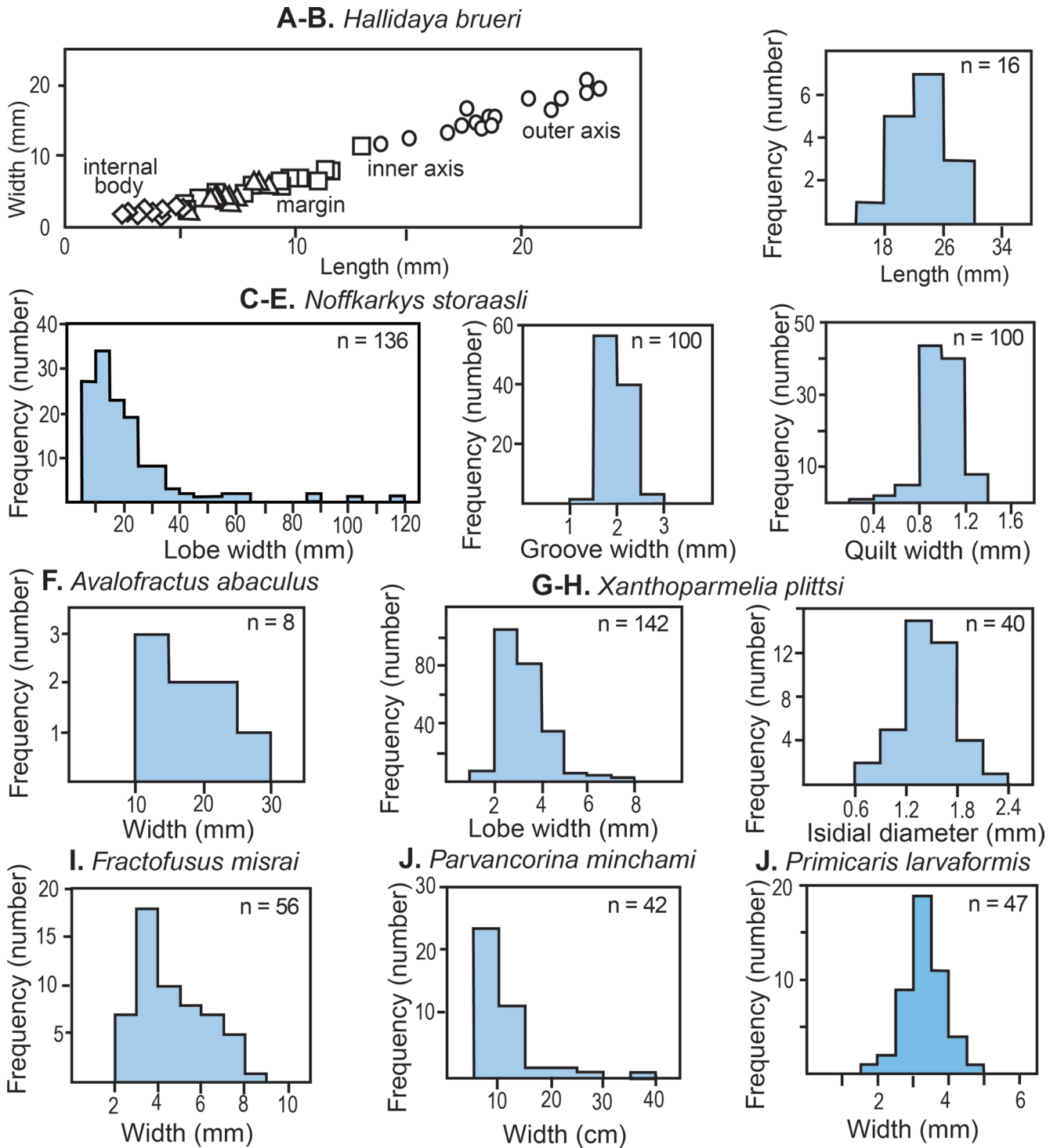


Fig. 7—Size distributions of Early Cambrian megafossils (A–E) from Fishtrap Lake, Montana and comparative modern lichen (G–H), and extinct vendobionts (F, I–J), and trilobitomorph (K). Modern lichen (*Xanthoparmelia plittsi*) is the specimen in collection of Museum of Natural and Cultural History. Sources of size data are Narbonne *et al.* (2009) for F, Gehling & Narbonne (2007) for I, Naimark & Ivantsov (2009) for J, and Zhang *et al.* 2003 for K.

the deep sea, whereas *Noffkarkys* is found in supratidal to non-marine paleosols (Bland, 1984; Kolesnikov *et al.*, 2012).

Noffkarkys storaasli has been described here in terms such as “quilt” and “lobes” that are neutral with respect to biological affinities, but the terminology of lichen thalli more adequately explains both its distinctive morphology (Figs 3E–J, 4A–D, 5D–E) and cross section (Figs 6A–B, I). The five histologically distinct layers from top to bottom can be interpreted as: (1) dense fabric in a thick, dark gray zone with opaque nests comparable with a cortical algal layer;

(2) loose fabric in a loosely woven medulla; (3) tangled fabric in a gray densely woven fabric like a lower cortex; (4) vertical fabric of elongate structures of varying thickness radiating downwards like rhizines. Size distribution data are compatible with organisms with indeterminate growth such as a seaweed, xenophyophore, foraminiferan, or lichen. *Noffkarkys storaasli* vegetative lobes have a log-normal size distribution (Fig. 7C), as demonstrated here for the modern lichen *Xanthoparmelia plittsi* (Fig. 7G), and for vendobionts such as *Aspidella* (Gehling *et al.*, 2000; Peterson *et al.*, 2003;

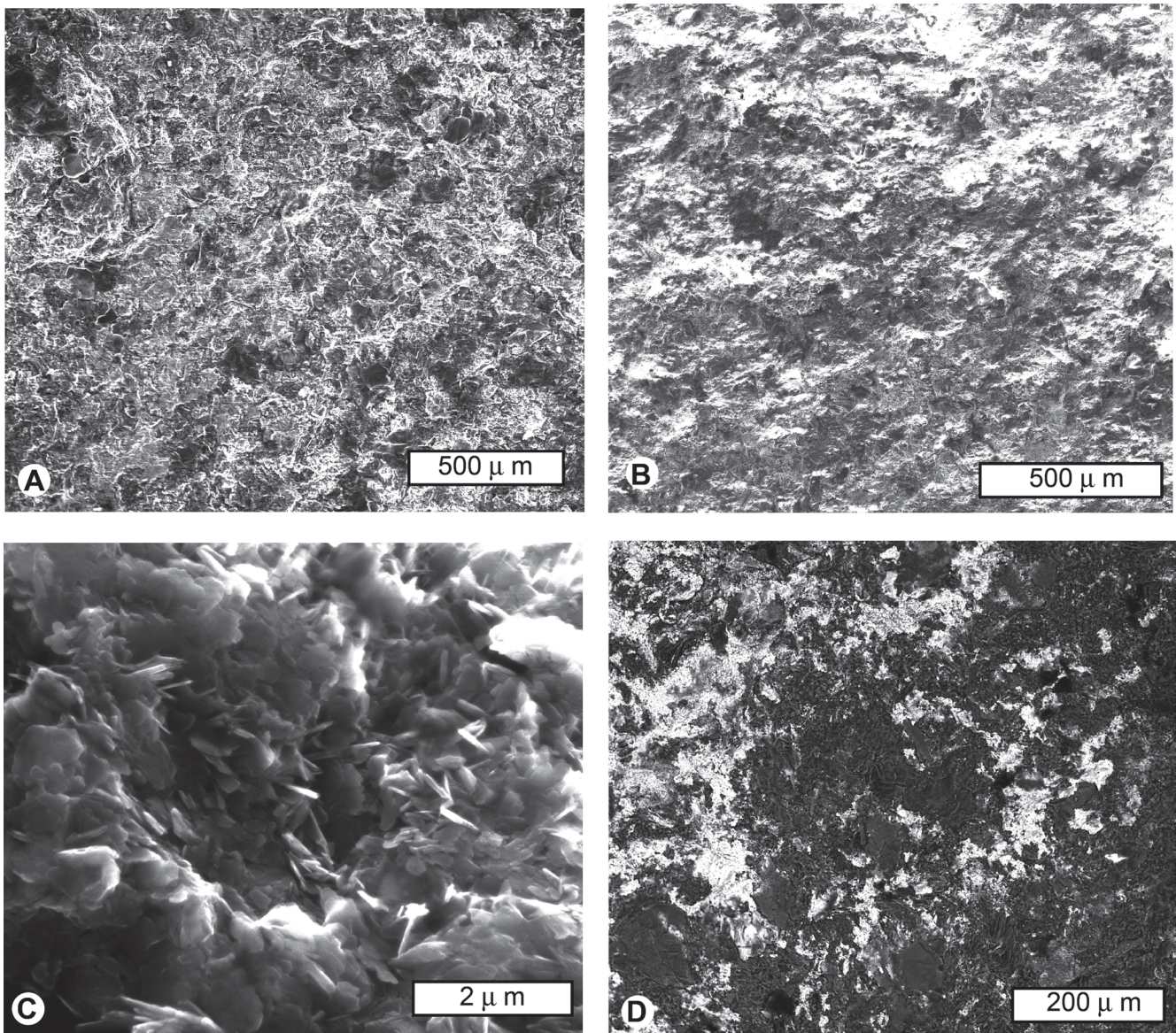


Fig. 8—Scanning electron micrographs of natural surfaces (not cross sections) of the quilted fossil *Noffkarkys storaasli* (specimen F113719 from ~150 cm in Retallack 2013a) from Early Cambrian Flathead Sandstone, Fishtrap Lake, Montana. Details of quilt (A–B) shows radial grooves (sloping upper left to lower right) punctuated by dark filament insertions. Crystal form of clay (C) is that of illite. Backscatter image (D) shows ferruginous-carbonaceous filaments and grooves (white) in background of clay (gray).

Hofmann *et al.*, 2008) and *Dickinsonia* (Retallack, 2007). Comparable log-normal size distributions are presented here for other problematic fossils (Fig. 7F, I–J; data from Gehling & Narbonne, 2007; Hofmann *et al.*, 2008, Narbonne *et al.*, 2009; Naimark & Ivantsov, 2009), and can be contrasted with normal size distributions of undisputed metazoans, such as the Cambrian *Primicaris larvaformis* (Fig. 7J, data from Zhang *et al.*, 2002; Lin *et al.*, 2006).

HALLIDAYA BRUERI (WADE) RETALLACK & BROZ 2020

Morphology

Hallidaya brueri (Wade, 1969) has been emended to include its constant associate “*Skinnera brooksi*”, as the lower and upper surfaces, respectively (Retallack & Broz, 2020). These are discoid fossils with a marginal area of radiating, branching striations and central area with three or more elliptical to lobate bodies, unlike other problematic discoid fossils reviewed by MacGabhann (2007) and Razumovskiy *et al.* (2015). The fossils are biconvex discoids, preserved as hypichnial ridges on the lower side with wide striated margin and few central bodies, and as epichnial grooves on upper side within narrow striated margin and many central bodies. The distinct central and marginal portions distinguish *Hallidaya* from non-fossil circular structures such as liesegang banding (Merino, 1984), nodules (Retallack, 1997), or accretionary lapilli (Reimer, 1983). Fishtrap Lake *Hallidaya* vary in distinctness and relief (Figs 3A–B, 4G–H, 5A–B), and some may have been partly decayed.

Measurements

Type material of *Hallidaya brueri* from central Australia is 5–50 mm in diameter (Retallack & Broz, 2020), like the best preserved one from Fishtrap Lake (Figs 3A, 4G, 5A), which is 22.8 mm in diameter, with a margin 3.3–7.1 mm wide, and central ovoids 2.6–3.4 mm wide and 3.7–5.8 mm long. All 15 specimens from Fishtrap Lake are 19.0 ± 2.8 mm in diameter (mean and standard deviation), with margin 7.2 ± 1.3 mm wide, central ovoid length 8.9 ± 2.2 mm, and central ovoid widths 6.2 ± 1.8 mm.

Histology

In thin section, *Hallidaya brueri* is biconvex (Fig. 6E–F), thus explaining its negative relief on the upper side and positive relief on the lower side. The overall biconvex disc has dark carbonaceous–ferruginous clay on both sides of a central area of loose filamentous fabric, except for an irregular region of the bottom center where elongate features arch downward into the sediment below. An elevated central lumpy region of unusually thick, clayey–carbonaceous material corresponds

with the inner subtriangular ring of the compressions. Other discoid outlines of comparable size were seen in thin section (Fig. 6F) with much thinner opaque outlines, a wider area of loosely woven fabric in the center, and a wider lower opening. These impressions may have been less distinct because of decay of dark organic matter back to the most decay-resistant outer envelope.

Biological affinities

Hallidaya, like *Arumberia* and *Noffkarkys*, is known in Cambrian as well as Ediacaran rocks, in which discoid fossils have traditionally been regarded as jellyfish, polyps, or sea pen holdfasts (Sprigg, 1947; Fedonkin *et al.*, 2008). These discoid fossils are more strongly impressed in the center than the margins, where cnidarian muscle masses should be located (Seilacher, 1992), and they make surprisingly thick impressions for such deeply buried fossils (Retallack, 2007). Other discoid fossils such as *Arkarua* and *Tribrachidium* have been interpreted as echinoderms comparable with Edrioasteroids (Fendonkin *et al.*, 2008). Cnidarian or echinoderm affinities for *Hallidaya* are ruled out by their fibrous histology (Fig. 6E–F, J). Associated filaments are not fungal decay of metazoans, because filaments are stouter (50–200 μm), longer and more branched than those of saprophytic fungi such as yeasts, moulds and rot fungi. Saprophytic hyphae are only 2–5 μm wide when preserved in amber (Poinar, 1992) and in permineralized fossil wood (Stubblefield & Taylor, 1988). Furthermore, these poorly preserved elongate elements radiate away from the lower center of the fossils rather than converging into them and coating their surfaces like saprophytes. Finally, the elongate elements are denser within, rather than outside, the fossils and decay does not seem to have opened large empty spaces for clay or silt infiltration. Metazoa, even decayed ones, are an unlikely explanation for *Hallidaya* or other comparable discoids (MacGabhann, 2007).

Discoid fossils have also been interpreted as microbial colonies (Steiner & Reitner, 2001; Grazhdankin & Gerdes, 2007). Bacterial colonies can be concentrically banded and have complex radial and infolded patterns (Ben-Jacob *et al.*, 1994; Shapiro, 1998), but not structures differentiated into central and marginal zones like *Hallidaya*. Microbial colonies collapse completely during burial compaction to form hypichnial ridges (Retallack, 2016a), unlike histologically differentiated and thick *Hallidaya* (Fig. 6E).

Finally, discoids have been compared with lichenized fungi and fungal fruiting bodies (Retallack, 1994; Peterson *et al.*, 2003), because of peculiarities of their sessile growth, decay without marginal collapse, and compaction-resistance. *Hallidaya brueri* has been described here in terms such as “margin” and “ellipsoidal bodies” that are neutral with respect to biological affinities, but the terminology of fungi and lichens gives an array of options for its distinctive morphology (Figs

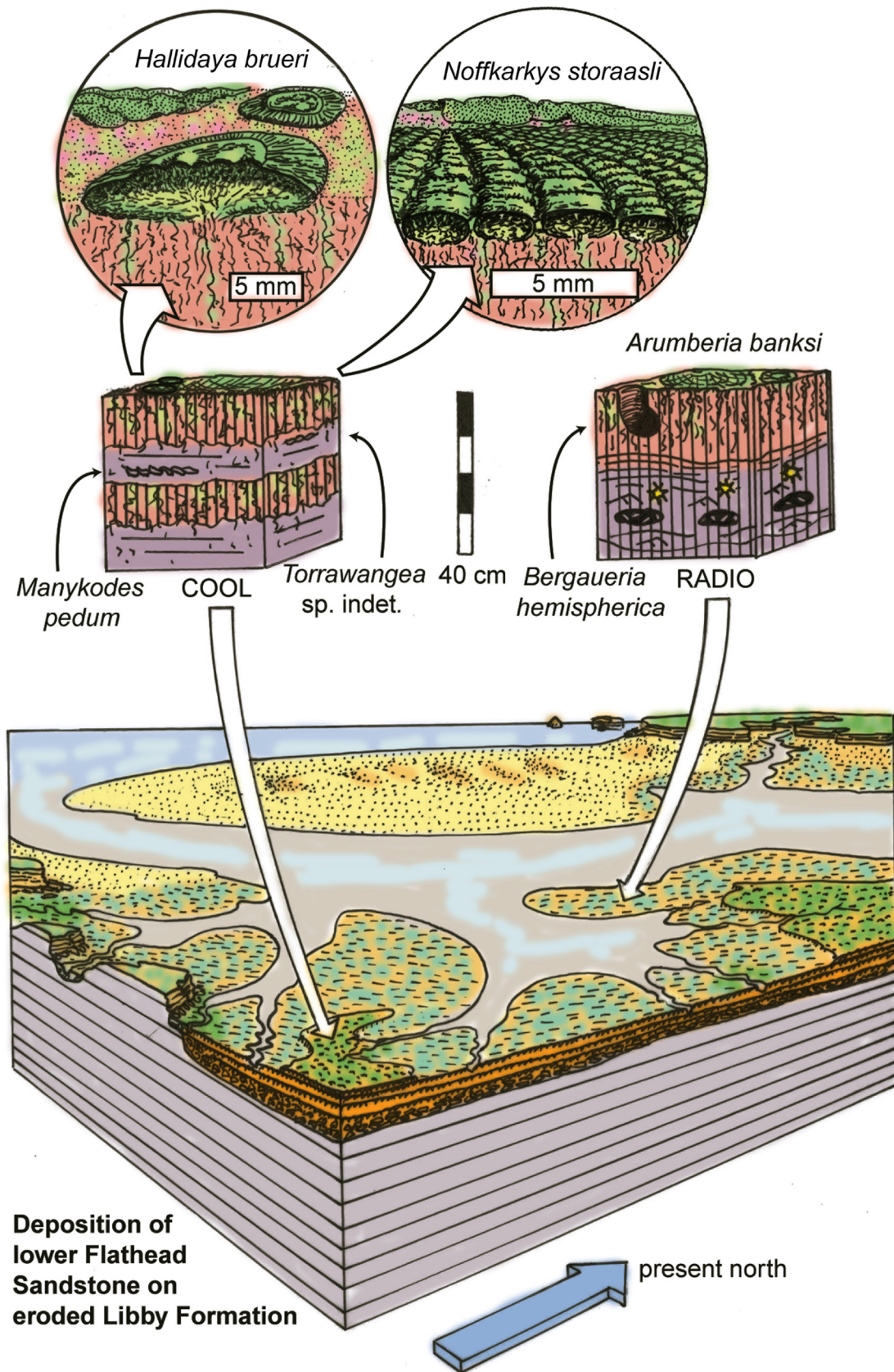


Fig. 9—Reconstructed paleoenvironment of Early Cambrian megafossils from the lower Flathead Sandstone near Fishtrap Lake, Montana.

3A–B, 4G–H), and cross section (Fig. 6E). The “ellipsoidal bodies” for example, could be peridioles like those of bird nest fungus (*Nidula candida*), puffballs within a fringe like *Geaster saccatum*, pycnidia like those of the lichen *Verrucaria mucosa*, coralloid isidia comparable with *Xanthoparmelia plittsi*, or apothecia of *Caloplaca diphyodes* and *Placopsis gelida* (Brodo *et al.*, 2001). Of these options a fungal fruiting body is compatible with its normal size distribution (Fig. 7B) comparable with reproductive structures (isidia of Fig. 7H) as opposed to log–normal distribution of vegetative lobes of lichens (Fig. 7G). Thin sections of *Hallidaya* do not show parallel and vertical filaments like a hymenium above a woven filamentous area like a hypothecium of a lichen apothecium (Brodo *et al.*, 2001). Nor do the internal bodies of *Hallidaya* have well defined margins like those of lichen apothecia (Brodo *et al.*, 2001). *Hallidaya brueri* is most like a foliose lichen with a prothallus (distinct margin of unlichenized tissue), and its central depressions are comparable with diffuse reproductive organs such as soredia or isidia.

IMPLICATIONS FOR CAMBRIAN EVOLUTION AND ECOLOGY

The fossil assemblage described here now allows visualization of an earliest Cambrian coastal landscape that was far from barren of life (Fig. 9). In the terminology of Retallack (1992) basal Cambrian vegetation of Fishtrap Lake was a polsterland, a vegetation formation of clumps of non–vascular plants or lichens. It can also be described as a rugose biological soil crust (Belnap, 2003), or as a perimorphic microbiotic soil crust (Eldridge & Greene, 1994). It was neither a smooth and subterranean microbial earth (Retallack, 1992), smooth biological soil crust (Belnap, 2003), nor cryptomorphic microbiotic soil crust (Eldridge & Greene, 1994). Nor was it dotted with large plants as in a brakeland (Retallack, 1992), pinnacled or rolling biological soil crust (Belnap, 2003), or hypermorphic microbiotic soil crust (Eldridge & Greene, 1994). Polsterlands are not only intermediate in ecological successional colonization of bare surfaces (Eldridge & Greene, 1994), but also likely evolutionary intermediates in the colonization of land on geological time scales (Retallack, 1992).

The assemblage of *Arumberia*, *Noffkarkys* and *Hallidaya* described here was a widespread terrestrial community during both Ediacaran and Cambrian. In addition to Fishtrap Lake, red–beds with *Arumberia* are known from 13 regions: (1) Ediacaran, Maihar Sandstone, near Maihar and Khoh, India (Kumar & Pandey, 2008); (2) Ediacaran Jodhpur Sandstone near Khatu, India (Kumar & Ahmad, 2012; Srivastava, 2014); (3) Ediacaran, Bonney Sandstone, Brachina Gorge, Flinders Ranges, South Australia (Bland, 1984); (4) Ediacaran, Grant Bluff Formation near Mt Skinner, Northern Territory, Australia (Wade, 1969; Retallack & Broz, 2020); (5) Ediacaran, Grant Bluff Formation at Central Mount Stuart, Northern Territory,

Australia (Retallack & Broz, 2020); (6), Ediacaran Arumberia Sandstone at Ross River, Valley Dam and Hargrave Lookout, Northern Territory, Australia (Glaessner & Walter, 1975; Mapstone & McIlroy, 2006; Retallack & Broz, 2020); (7) Ediacaran Ust Sylvitsa, Chernyi Kamen and Zigan formations of the Ural Mountains, Russia (Becker, 1980, 1985; Kolesnikov *et al.*, 2012); (8) Ediacaran Moshakov Formation near Artyugino, east Siberia (Liu *et al.*, 2013); (9) Ediacaran Gibbett Hill Formation of Newfoundland, Canada (Bland, 1984); (10) late Ediacaran or Early Cambrian, Synalds, Lightspout, and Bridges formations near Church Stretton, England (Bland, 1984; McIlroy *et al.*, 2005); (11) Early Cambrian, Billy Creek Formation, Flinders Ranges, South Australia (Bland, 1984; Retallack, 2008); (12) late Ediacaran or early Ordovician, Rozel Conglomerate on the British Channel island of Jersey (Bland, 1984; Went, 2005); and (13) late Ediacaran or early Ordovician Pluorivo Formation near Erquy and Bréhec, France (Bland, 1984). An additional 3 localities for *Arumberia* in Namibia, China and Sweden are uncertain as to identity of the fossils or the facies in which they were found (Bland, 1984).

At Fishtrap Lake the vendobionts *Arumberia*, *Noffkarkys* and *Hallidaya* are abundant on selected horizons, and there is no evidence that they interacted with marine trace fossils *Manykodes pedum*, *Bergaueria hemispherica*, *Didymaulichnus lyelli*, and *Torrowangea* within the intervening beds (Fig. 2). Chemical and magnetic susceptibility indications of oxidation in the vendobiont surfaces did not extend to the beds with trace fossils (Retallack, 2013a). This is interpreted here as estuarine supratidal flats of near–marine sediments colonized by vendobionts (Fig. 9).

Evidence of interaction in vendobiont communities is rare globally (Mitchell *et al.*, 2019). One example of a trail ploughing through a *Dickinsonia* has been interpreted as scavenging of a buried body (Gehling & Droser, 2018), but the fossil has good relief unlike known decayed and deflated *Dickinsonia* (Retallack, 2007). The clear mounded levees on either side of the “burrow” are evidence that this is a surface trail, and evidence of herbivory or fungivory rather than scavenging. No such interaction between vendobionts and animals was seen in large collections of Cambrian fossils from Fishtrap Lake, or Ediacaran localities in central Australia (Retallack & Broz, 2020). The rarity of vendobiont interactions has been quantified by Mitchell & Butterfield (2018) and Mitchell *et al.* (2019). These largely sessile communities were more like plant and lichen communities than benthic marine communities. Similarly, Darroch *et al.* (2018a) demonstrate high rank order differentiation in Ediacaran communities. This is also similar to communities of lichens (Kuusinen, 1994; Dietrich & Scheidegger, 1997; Thor *et al.*, 2010) and plants (Ulrich *et al.*, 2016). Beta diversity in Ediacaran communities is higher than in any known benthic marine community, either modern or fossil (Finnegan *et al.*, 2019), and more like terrestrial communities (Kessler *et al.*,

2009; Fernandez–Going *et al.*, 2013). There are multiple other lines of evidence that some vendobiont communities were non–marine: soil–like mineral and grain size modal variation within beds below them (Retallack, 2012), soil–like tau analysis depletions (Retallack, 2013a), $\delta^{18}\text{O}$ – $\delta^{13}\text{C}$ correlation within carbonate nodules (Retallack, 2016c; Broz *et al.*, 2021), low boron assay (Retallack, 2020), high Ge–Si ratios of early diagenetic silica cement (Retallack, 2017), and eolian interbeds inferred from granulometry (Retallack, 2019; McMahon *et al.*, 2020).

The Ediacaran–Cambrian transition has been envisaged as an “agronomic revolution” of marine burrowing organisms destroying and replacing marine Ediacaran matgrounds (Seilacher & Pflüger, 1994; Oji *et al.*, 2018). One way to interpret the Cambrian co–occurrence of interbeds alternating with marine trace fossils and vendobionts at Fishtrap Lake, would be as an intermediate stage in a protracted transition from Ediacaran matgrounds to fully bioturbated marine siltstones (Buatois *et al.*, 2014; Shahkarami *et al.*, 2017; Laing *et al.*, 2019). This view is difficult to maintain in view of the geochemical and magnetic susceptibility evidence (Retallack, 2013a) that the vendobionts were not on microbial submarine matgrounds, but well drained polsterlands. Nor does evidence from Fishtrap Lake support the idea that marine fossils destroyed Ediacaran marine matgrounds as a terminal Ediacaran catastrophe, or dual late Ediacaran catastrophes (Schiffbauer *et al.*, 2016; Darroch *et al.*, 2018a; Buatois *et al.*, 2018). The *Arumberia*–*Noffkarkys*–*Hallidaya* community of Fishtrap Lake, and many other localities listed above are evidence that this community did not go extinct at the end of the Ediacaran, and may have persisted into the Ordovician (Bland, 1984; Went, 2005; Budd & Jensen, 2017). Other vendobionts *Rutgersella* and *Protonympha* persisted in intertidal to terrestrial habitats in the Silurian (Retallack, 2015a) and Devonian (Retallack, 2018). Thus terrestrial “Mattresslands” of vendobionts (Retallack & Broz, 2020) were unaffected by the evolution and intensification of burrowing organisms of marine “Wormworld” (Schiffbauer *et al.*, 2016). Unfossiliferous Cambrian microbial matgrounds (Shahkarami *et al.*, 2017; Laing *et al.*, 2019) are additional evidence that these kinds of environments persisted (Grazhdankin & Gerdes, 2007; Kolesnikov *et al.*, 2012), and were not completely eradicated by evolving marine bioturbation during the earliest Cambrian.

An alternative to the idea of marine diversification through burrowing is the Ediacaran “savanna hypothesis” (Budd & Jensen, 2017; Mitchell *et al.*, 2020), which despite the terrestrial name, refers to the way in which large unskeletonized marine fossils created heterogeneous habitats replacing more uniform earlier marine matgrounds. Budd and Jensen (2017) considered vendobionts key heterogeneities for this change, but if vendobionts were terrestrial creatures as is apparent in this study and others (Retallack 2013b, 2016b, 2020), the marine savanna hypothesis would be more

likely due to Ediacaran sea weeds, which did indeed grow in size and complexity (Bykova *et al.*, 2020; Del Cortona *et al.*, 2020). Reconstruction of the widespread Ediacaran and Cambrian *Arumberia*–*Noffkarkys*–*Hallidaya* assemblage as ground–hugging communities (Fig. 9), suggests that titles such as “Garden of Ediacara” (McMenamin, 2000), and “Underground Vendobionta” (Grazhdankin & Seilacher, 2002), were descriptions rather than metaphors.

Acknowledgements—Mark Storaasli discovered the locality at Fishtrap Lake, and collected some of the most important fossils for this paper. Nicholas and Jeremy Retallack helped during fieldwork. Jesse Pruitt at Idaho State University provided laser scans of several of the specimens Dima Grazhdankin aided fieldwork, and provided sketches and advice. Timothy Topper edited a previous version of this article. Bruce Runnegar, Shuhai Xiao, Alexander Liu, and Bill Schopf offered useful discussion.

REFERENCES

- Antcliffe JB & Brasier MD 2007. *Charnia* and sea pens are poles apart. Geological Society of London Journal 164: 49–51.
- Antcliffe JB & Brasier MD 2008. *Charnia* at 50: developmental models for Ediacaran fronds. Palaeontology 51: 11–26.
- Becker YR 1980. A new locality of Ediacara–type fauna in the Urals. Doklady Akademia Nauk SSSR 254: 480–482 (in Russian).
- Becker YR 1985. Vendian metazoa from the Urals. In: Sokolov BS & Iwanowski AB (Editors)—The Vendian System: Vol. 1 Paleontology, Springer, Berlin: 121–131.
- Belnap J 2003. Comparative structure of physical and biological soil crusts. In: Belnap J & Lange OL (Editors)—Biological soil crusts: structure, function and management, Springer, Berlin: 177–191.
- Ben–Jacob E, Schachnet O, Tenenbaum A, Cohen I, Czirok A & Vicsek T 1994. Generic modelling of cooperative growth patterns in bacterial colonies. Nature 368: 46–49.
- Bippus AC, Stockey RA, Rothwell GW & Tomescu AMF 2017. Extending the fossil record of Polytrichaceae: Early Cretaceous *Meantoina alopsoioides* gen. et sp. nov., permineralized gametophytes with gemma cups from Vancouver Island. American Journal of Botany 104: 584–597.
- Bland BH 1984. *Arumberia* Glaessner & Walter, a review of its potential for correlation in the region of the Precambrian–Cambrian boundary. Geological Magazine 121: 625–633.
- Bold HC & Wynne MJ 2000. Introduction to the algae. Prentice–Hall, Englewood Cliffs.
- Brasier MD, Antcliffe JB & Liu AG 2012. The architecture of Ediacaran fronds. Palaeontology 55: 1105–1124.
- Brodo IM, Sharnoff SD & Sharnoff S 2001. Lichens of North America. Yale University Press, New Haven.
- Broz A, Retallack GJ, Maxwell TM & Silva LCR 2021. A record of vapour pressure deficit preserved in wood and soil across biomes. Nature Scientific Reports 11: 1–12.
- Buatois LA 2018. *Treptichnus pedum* and the Ediacaran–Cambrian boundary: significance and caveats. Geological Magazine 155: 174–180.
- Buatois LA, Almond J, Mángano MG, Jensen S & Germs GJ 2018. Sediment disturbance by Ediacaran bulldozers and the roots of the Cambrian explosion. Scientific Reports 8(1): 1–9.
- Buatois LA, Narbonne GM, Mángano MG, Carmona NB & Myrow P 2014. Ediacaran matground ecology persisted into the earliest Cambrian. Nature Communications 5: 1–5.
- Budd GE & Jensen S 2017. The origin of the animals and a ‘Savannah’ hypothesis for early bilaterian evolution. Biological Reviews 92: 446–473.

- Bush JH 1989. The Cambrian System of northern Idaho and northwestern Montana. *In*: Chamberlain VE, Breckenridge RM & Bonnicksen B (Editors)—Guidebook to the Geology of Northern and Western Idaho and Surrounding Area. Idaho Bureau of Mines and Geology Bulletin 19: 103–121.
- Bykova N, LoDuca ST, Ye Q, Marusin V, Grazhdankin D & Xiao S 2020. Seaweeds through time: Morphological and ecological analysis of Proterozoic and early Paleozoic benthic macroalgae. *Precambrian Research*: 105875.
- Darroch SA, LaFlamme M & Wagner PJ 2018a. High ecological complexity in benthic Ediacaran communities. *Nature Ecology and Evolution* 2(10): 1541–1547.
- Darroch SA, Smith EF, Laflamme M & Erwin DH 2018b. Ediacaran extinction and Cambrian explosion. *Trends in Ecology & Evolution* 33: 653–663.
- Del Cortona A, Jackson CJ, Bucchini F, Van Bel M, D'Hondt S, Škaloud P, Delwiche CF, Knoll AH, Raven JA, Verbruggen H & Vandepoel K 2020. Neoproterozoic origin and multiple transitions to macroscopic growth in green seaweeds. *Proceedings of the National Academy of Sciences* 117: 2551–2559.
- Dietrich M & Scheidegger C 1997. Frequency, diversity and ecological strategies of epiphytic lichens in the Swiss Central Plateau and the Pre-Alps. *The Lichenologist* 29: 237–258.
- Dzik J 2005. Behavioral and anatomical unity of the earliest burrowing animals and the cause of the “Cambrian explosion”. *Paleobiology* 31: 503–521.
- Eldridge DJ & Greene RSB 1994. Microbiotic soil crusts: a review of their roles in soils and ecological processes in the rangelands of Australia. *Australian Journal of Soil Research* 32: 389–415.
- Fedonkin MA, Gehling JG, Grey K, Narbonne GM & Vickers-Rich P (Editors) 2008. The rise of animals: evolution and diversification of the Kingdom Animalia. Johns Hopkins University Press, Baltimore.
- Fernandez-Goñi BM, Harrison SP, Anacker BL & Safford HD 2013. Climate interacts with soil to produce beta diversity in Californian plant communities. *Ecology* 94: 2007–2018.
- Finnegan S, Gehling JG, & Droser ML 2019. Unusually variable paleocommunity composition in the oldest metazoan fossil assemblages. *Paleobiology* 45: 235–245.
- Flude LI & Narbonne GM 2008. Taphonomy and ontogeny of a multibranching Ediacaran fossil: *Bradgatia* from the Avalon Peninsula of Newfoundland. *Canadian Journal of Earth Sciences* 45: 1095–1109.
- Ford TD 1958. Precambrian fossils of Charnwood Forest. *Yorkshire Geological Society Proceedings* 31: 211–217.
- Gehling JG & Droser ML 2018. Ediacaran scavenging as a prelude to predation. *Emerging Topics in Life Sciences* 2: 213–222.
- Gehling JG & Narbonne GM 2007. Spindle-shaped Ediacara fossils from the Mistaken Point assemblage, Avalon Zone, Newfoundland. *Canadian Journal of Earth Sciences* 44: 367–387.
- Gehling JG, Narbonne GM & Anderson MM 2000. The first named Ediacaran body fossil *Aspidella terranovica*. *Palaentology* 43: 427–456.
- Glaessner MF & Walter MR 1975. New Precambrian fossils from the Arumbera Sandstone, Northern Territory. *Alcheringa* 1: 59–69.
- Gould RE & Delevoryas T 1977. The biology of *Glossopteris*: evidence from petrified seed-bearing and pollen-bearing organs. *Alcheringa* 1: 387–399.
- Grazhdankin D, Balthasar U, Nagovitsin KE & Kochev BB 2008. Carbonate-hosted Avalon-type fossils in arctic Siberia. *Geology* 36: 803–806.
- Grazhdankin D & Gerdes H 2007. Ediacaran microbial colonies. *Lethaia* 30: 201–210.
- Grazhdankin D & Seilacher A 2002. Underground Vendobionta from Namibia. *Palaentology* 45: 57–78.
- Hofmann HJ, O'Brien SJ & King AF 2008. Ediacaran biota on Bonavista Peninsula, Newfoundland, Canada. *Journal of Paleontology* 82: 1–36.
- Hoyal Cuthill JF & Han J 2018. Cambrian petalonamid *Stromatoveris* phylogenetically links Ediacaran biota to later animals. *Palaentology* 61: 813–823.
- Ivantsov AY, Narbonne GM, Trusler PW, Greentree C & Vickers-Rich P 2015. Elucidating *Ernieetta*: new insights from exceptional specimens in the Ediacaran of Namibia. *Lethaia* 49: 540–554.
- Jenkins RJF 1992. Functional and ecological aspects of Ediacaran assemblages. *In*: Lipps JH & Signor PW (Editors)—Origin and early evolution of the Metazoa, Plenum Press, New York: 131–176.
- Jenkins RJF, Plummer PS & Moriarty KC 1981. Late Precambrian pseudofossils from the Flinders Ranges, South Australia. *Royal Society of South Australia Transactions* 105: 67–83.
- Jennings JR 1974. Lower Pennsylvanian plants of Illinois. I: A flora from the Pounds Sandstone Member of the Caseyville Formation. *Journal of Paleontology* 48: 459–473.
- Jennings JR 1985. Fossil plants from the Mauch Chunk Formation of Pennsylvania: morphology of *Adiantites antiquus*. *Journal of Paleontology* 59: 1146–1157.
- Keim JW & Rector RJ 1964. Paleozoic rocks in northwestern Montana—a newly recognized occurrence. *Geological Society of America Bulletin* 75: 575–578.
- Kessler M, Abrahamczyk S, Bos M, Buchori D, Putra DD, Gradstein SR, Höhn P, Kluge J, Orend F, Pitopang R & Saleh S 2009. Alpha and beta diversity of plants and animals along a tropical land-use gradient. *Ecological Applications* 19: 2142–2156.
- Kolesnikov AV, Grazhdankin DV & Maslov AV 2012. *Arumberia*-type structures in the Upper Vendian of the Urals. *Doklady Earth Sciences* 447: 1233–1239.
- Kumar S & Ahmad S 2012. Restudy of an Ediacaran medusoid *Marsonia artiyansis* Raghav *et al.*, 2005, from the Jodhpur Sandstone, Jodhpur District, western Rajasthan. *Journal of the Palaeontological Society of India* 57: 135–142.
- Kumar S & Pandey SK 2008. *Arumberia* and associated fossils from the Neoproterozoic Maihar Sandstone, Vindhyan Supergroup, central India. *Journal of the Palaeontological Society of India* 53: 83–97.
- Kuusinen M 1994. Epiphytic lichen diversity on *Salix caprea* in old-growth southern and middle boreal forests of Finland. *Annales Botanici Fennici* 31: 77–92.
- Laing BA, Mángano MG, Buatois LA, Narbonne GM & Gougeon RC 2019. A protracted Ediacaran–Cambrian transition: an ichnologic ecospace analysis of the Fortunian in Newfoundland, Canada. *Geological Magazine* 156: 1623–1630.
- Liivamägi S, Somelar P, Mahaney WC, Kirs J, Vircava I & Kirsimäe K 2014. Late Neoproterozoic Baltic paleosol: Intense weathering at high latitude? *Geology* 42: 323–326.
- Lin J-P, Gon SP, Gehling JG, Babcock LE, Zhao Y-L, Hu S-X, Yuan JL, Yu M-Y & Peng J 2006. A *Parvancorina*-like arthropod from the Cambrian of South China. *Historical Biology* 18: 33–45.
- Liu AG, Brasier MD, Bolgolepova OK, Raevskaya EG & Gubanov AP 2013. First report of a newly discovered Ediacaran biota from the Irkineeva Uplift, East Siberia. *Newsletters in Stratigraphy* 46: 95–110.
- Lund EH 1973. Oregon coastal dunes between Coos Bay and Sea Lion Point. *Ore Bin* 35: 73–92.
- MacGabhann BA 2007. Discoidal fossils of the Ediacaran: a review of current understanding. *In*: Vickers-Rich P & Komarower P (Editors)—The rise and fall of the Ediacaran biota. *Geological Society of London Special Publication* 286: 297–313.
- Maples CG & Archer AW 1987. Redescription of Early Pennsylvanian trace-fossil holotypes from the nonmarine Hindostan Whetstone Beds of Indiana. *Journal of Paleontology* 61: 890–897.
- Mapstone NB & McLroy D 2006. Ediacaran fossil preservation: taphonomy and diagenesis of a discoid biota from the Amadeus Basin, central Australia. *Precambrian Research* 149: 126–148.
- Matten LC 1973. Preparation of pyritized plant petrifications: “a plea for pyrite”. *Review of Palaeobotany and Palynology* 16: 165–173.
- McLroy D, Crimes TP & Pauley JC 2005. Fossils and matgrounds from the Neoproterozoic Longmyndian Supergroup, Shropshire, UK. *Geological Magazine* 142: 441–445.
- McLroy D, Dufour SC, Taylor R & Nicholls R 2021. The role of symbiosis in the first colonization of the seafloor by macrobiota: Insights from the oldest Ediacaran biota (Newfoundland, Canada). *Biosystems* 205: 104413.
- McLroy D & Walter MR 1997. A reconsideration of the biogenicity of

- Arumberia banksi* Glaessner & Walter. *Alcheringa* 21: 79–80.
- McMahon WJ, Davies NS, Liu AG & Went DJ 2021. Enigma variations: characteristics and likely origin of the problematic surface texture *Arumberia*, as recognized from an exceptional bedding plane exposure and the global record. *Geological Magazine* 159: 1–20.
- McMahon WJ, Liu AG, Tindal BH & Kleinmans MG 2020. Ediacaran life close to land: Coastal and shoreface habitats of the Ediacaran macrobiota, the Central Flinders Ranges, South Australia. *Journal of Sedimentary Research* 90: 1463–1499.
- McMenamin MA 2000. *The garden of Ediacara: discovering the first complex life*. Columbia University Press, New York.
- Merino E 1984. Survey of geochemical self-patterning phenomena. *In*: Nichols G & Baras F (Editors)—*Chemical instabilities*. North Atlantic Treaty Organization Advances in Science Information Series C120: 305–328.
- Mitchell EG, Bobkov N, Bykova N, Dhungana A, Kolesnikov AV, Hogarth IR, Liu AG, Mustill TM, Sozonov N, Rogov VI & Xiao S 2020. The influence of environmental setting on the community ecology of Ediacaran organisms. *Interface Focus* 10: 20190109.
- Mitchell EG & Butterfield NJ 2018. Spatial analyses of Ediacaran communities at Mistaken Point. *Paleobiology* 44: 40–57.
- Mitchell EG, Harris S, Kenchington CG, Vixseboxse P, Roberts L, Clark C, Dennis A, Liu AG & Wilby PR 2019. The importance of neutral over niche processes in structuring Ediacaran early animal communities. *Ecology Letters* 22: 2028–2038.
- Naimark EB & Ivantsov AY 2009. Growth variability in the Late Vendian problematic *Parvancorina* Glaessner. *Paleontological Journal* 43: 12–18.
- Narbonne GM, LaFlamme M, Greentree C & Trusler P 2009. Reconstructing a lost world; Ediacaran rangeomorphs from Spaniard's Bay, Newfoundland. *Journal of Paleontology* 83: 503–523.
- Narbonne GM, Saylor BZ & Grotzinger JP 1997. The youngest Ediacaran fossils from southern Africa. *Journal of Paleontology* 71: 953–967.
- Oji T, Dornbos SQ, Yada K, Hasegawa H, Gonchigdorj S, Mochizuki T, Takayanagi H & Iryu Y 2018. Penetrative trace fossils from the late Ediacaran of Mongolia: early onset of the agronomic revolution. *Royal Society Open Science* 5: 172250.
- Peterson KJ, Waggoner B & Hagadorn JW 2003. A fungal analog for Newfoundland Ediacaran fossils? *Integrative and Comparative Biology* 43: 127–136.
- Pflug HD 1973. Zur fauna der Nama-Schichten in Südwest-Afrika. IV. Mikroskopische anatomie der Petalo-organismen. *Palaeontographica* A144: 166–202.
- Pflug HD 1994. Role of size increase in Precambrian organismic evolution. *Neues Jahrbuch für Geologie und Paläontologie Abhandlungen* 193: 245–286.
- Poinar GO 1992. *Life in amber*. Stanford University Press, Palo Alto.
- Razumovskiy AA, Ivantsov AY, Novikov IA & Korochantsev AV 2015. *Kuckaraukia multituberculata*: A new Vendian fossil from the Basa Formation of the Asha Group in the South Urals. *Paleontological Journal* 49: 449–456.
- Reimer TO 1983. Accretionary lapilli in volcanic ash falls: physical factors governing their formation. *In*: Peryt TM (Editor)—*Coated grains*, Springer, Berlin: 56–68.
- Retallack GJ 1992. What to call early plant formations on land. *Palaios* 7: 508–520.
- Retallack GJ 1994. Were the Ediacaran fossils lichens? *Paleobiology* 20: 523–544.
- Retallack GJ 1997. *A colour guide to paleosols*. Wiley, Chichester.
- Retallack GJ 2007. Growth, decay and burial compaction of *Dickinsonia*, an iconic Ediacaran fossil. *Alcheringa* 31: 215–240.
- Retallack GJ 2008. Cambrian paleosols and landscapes of South Australia. *Australian Journal of Earth Sciences* 55: 1083–1106.
- Retallack GJ 2009. Cambrian–Ordovician non-marine fossils from South Australia. *Alcheringa* 33: 355–391.
- Retallack GJ 2011. Problematic megafossils in Cambrian paleosols of South Australia. *Paleontology* 54: 1223–1242.
- Retallack GJ 2012. Were Ediacaran siliciclastics of South Australia coastal or deep marine? *Sedimentology* 59: 1208–1236.
- Retallack GJ 2013a. Early Cambrian humid, tropical paleosols from Montana. *In*: Driese SG (Editor)—*New frontiers in paleopedology and terrestrial paleoclimatology*. Society of Economic Paleontologists and Mineralogists Special Paper 44: 257–272.
- Retallack GJ 2013b. Ediacaran life on land. *Nature* 493: 89–92.
- Retallack GJ 2015a. Reassessment of the Silurian problematicum *Rutgersella* as another post-Ediacaran vendobiont. *Alcheringa* 39: 573–588.
- Retallack GJ 2015b. Acritarch evidence of a late Precambrian adaptive radiation of Fungi. *Botanica Pacifica* 4: 19–33.
- Retallack GJ 2016a. Ediacaran fossils in thin-section. *Alcheringa* 40: 583–600.
- Retallack GJ 2016b. Ediacaran sedimentology and paleoecology of Newfoundland reconsidered. *Sedimentary Geology* 333: 15–31.
- Retallack GJ 2016c. Field and laboratory tests for recognition of Ediacaran paleosols. *Gondwana Research* 36: 94–110.
- Retallack GJ 2017. Exceptional preservation of soft-bodied Ediacara Biota promoted by silica-rich oceans: comment. *Geology* 44: e. 407.
- Retallack GJ 2018. Reassessment of the Devonian problematicum *Protonympha* as another post-Ediacaran vendobiont. *Lethaia* 51(3): 406–423.
- Retallack GJ 2019. Interflag sandstone laminae, a novel fluvial sedimentary structure with implication for Ediacaran paleoenvironments. *Sedimentary Geology* 379: 60–76.
- Retallack GJ 2020. Boron paleosalinity proxy for deeply buried Paleozoic and Ediacaran fossils. *Palaeogeography, Palaeoclimatology, Palaeoecology*, 540: 109536.
- Retallack GJ & Broz AP 2020. *Arumberia* and other Ediacaran–Cambrian fossils of central Australia. *Historical Biology* 33: 1964–1988.
- Retallack GJ, Sheldon ND, Cogoini M & Elmore RD 2003. Magnetic susceptibility of early Paleozoic and Precambrian paleosols. *Palaeogeography Palaeoclimatology Palaeoecology* 198: 373–380.
- Rindsberg AK & Kopaska-Merkel DC 2005. *Treptichnus* and *Arenicolites* from the Steven C. Minkin Paleozoic footprint site (Langsettian, Alabama, USA). *Pennsylvanian Footprints in the Black Warrior Basin of Alabama* 1: 121–141.
- Savazzi E 2007. A new reconstruction of *Protolyellia* (Early Cambrian psammocoral). *In*: Vickers-Rich P & Komarower P (Editors)—*The rise and fall of the Ediacaran biota*. Geological Society of London Special Publication 286: 339–353.
- Schaeffer B 1984. On the relationships of the Triassic–Liassic redfieldiiform fishes. *American Museum Novitates* 2795: 1–18.
- Schiffbauer JD, Huntley JW, O'Neil GR, Darroch SA, Laflamme M & Cai Y 2016. The latest Ediacaran Wormworld fauna: setting the ecological stage for the Cambrian Explosion. *GSA Today* 26: 4–11.
- Seilacher A 1992. Vendobionta and Psammocorallia: lost constructions of Precambrian evolution. *Geological Society of London Journal* 149: 607–613.
- Seilacher A 2007. The nature of vendobionts. *In*: Vickers-Rich P & Komarower P (Editors)—*The rise and fall of the Ediacaran biota*. Geological Society of London Special Publication 286: 387–397.
- Seilacher A & Pflüger F 1994. From biotopes to benthic agriculture: A biohistoric revolution. *In*: Krumbein WE, Peterson DM & Stal LJ (Editors)—*Biostabilization of Sediments, Bibliotheks- und Informationssystem der Carl von Ossietzky Universität, Odenburg*: 97–105.
- Shahkarami S, Buatois LA, Mángano MG, Hagadorn JW & Almond J 2020. The Ediacaran–Cambrian boundary: Evaluating stratigraphic completeness. *Precambrian Research* 345: 105721.
- Shahkarami S, Mángano MG & Buatois LA 2017. Discriminating ecological and evolutionary controls during the Ediacaran–Cambrian transition: trace fossils from the Soltanieh Formation of northern Iran. *Palaeogeography, Palaeoclimatology, Palaeoecology* 476: 15–27.
- Shapiro JA 1998. Thinking about bacterial populations as multicellular organisms. *Annual Review of Microbiology* 52: 81–104.
- Shen B, Xiao S, Zhou C & Yuan X 2009. *Yangtziramulus zhangii* new genus and species, a carbonate-hosted macrofossil from the Ediacaran

- Dengying Formation in the Yangtze Gorges area, south China. *Journal of Paleontology* 83: 575–587.
- Sprigg RC 1947. Early Cambrian (?) jellyfishes from the Flinders Ranges, South Australia. *Royal Society of South Australia Transactions* 71: 212–224.
- Srivastava P 2014. Largest Ediacaran discs from the Jodhpur Sandstone, Marwar Supergroup, India: their palaeobiological significance. *Geoscience Frontiers* 5: 183–191.
- Steiner M & Reitner J 2001. Evidence of organic structures in Ediacara-type fossils and associated microbial mats. *Geology* 29: 1119–1122.
- Stubblefield SP & Taylor TN 1988. Recent advances in palaeomycology. *New Phytologist* 108: 3–25.
- Taylor TN, Hass H & Kerp H 1997. A cyanolichen from the Lower Devonian Rhynie Chert. *American Journal of Botany* 84: 901–910.
- Taylor TN & Taylor EL 1993. *The biology and evolution of fossil plants*. Prentice–Hall, Englewood Cliffs, New Jersey.
- Thor G, Johansson P & Jönsson MT 2010. Lichen diversity and red-listed lichen species relationships with tree species and diameter in wooded meadows. *Biodiversity and Conservation* 19: 2307–2328.
- Timdal E 2017. *Endocarpon crystallinum* found in Crete, a window-lichen new to Europe. *Herzogia* 30: 309–312.
- Ulrich W, Soliveres S, Thomas AD, Dougill AJ & Maestre FT 2016. Environmental correlates of species rank– abundance distributions in global drylands. *Perspectives in Plant Ecology Evolution and Systematics* 20: 56–64.
- Vogel S 1955. Niedere Fensterpflanzen in der Südafrikanischen Wüste. *Beitrage Biologie Pflanzen* 31: 45–135.
- Wade M 1969. Medusae from uppermost Precambrian or Cambrian sandstones in central Australia. *Palaontology* 12: 351–365.
- Wade RT 1935. *The Triassic fishes of Brookvale, New South Wales*. British Museum (Natural History), London.
- Walcott CD 1917. Cambrian geology and paleontology, IV, No. 2, The *Albertella* fauna in British Columbia and Montana. *Smithsonian Miscellaneous Collections* 67(2444): 7–8.
- Went DJ 2005. Pre-vegetation alluvial fan facies and processes: an example from the Cambro–Ordovician Rozel Conglomerate Formation, Jersey, Channel Islands. *Sedimentology* 52: 693–713.
- Xiao S, Shen B, Zhou C, Xie G & Yuan X 2005. A uniquely preserved Ediacaran fossil with direct evidence for a quilted bodyplan. *U.S. National Academy of Sciences Proceedings* 102: 10227–10232.
- Yuan X, Xiao S & Taylor TN 2005. Lichen-like symbiosis 600 million years ago. *Science* 308: 1017–1020.
- Zhang X–L, Han J, Zhang Z–F, Liu HQ & Shu D–G 2002. Reconsideration of the supposed naraoid larva from the Early Cambrian Chengjiang Lagerstätten. *Palaontology* 46: 447–465.